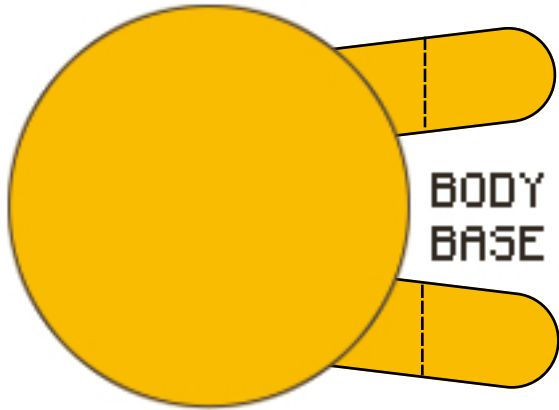


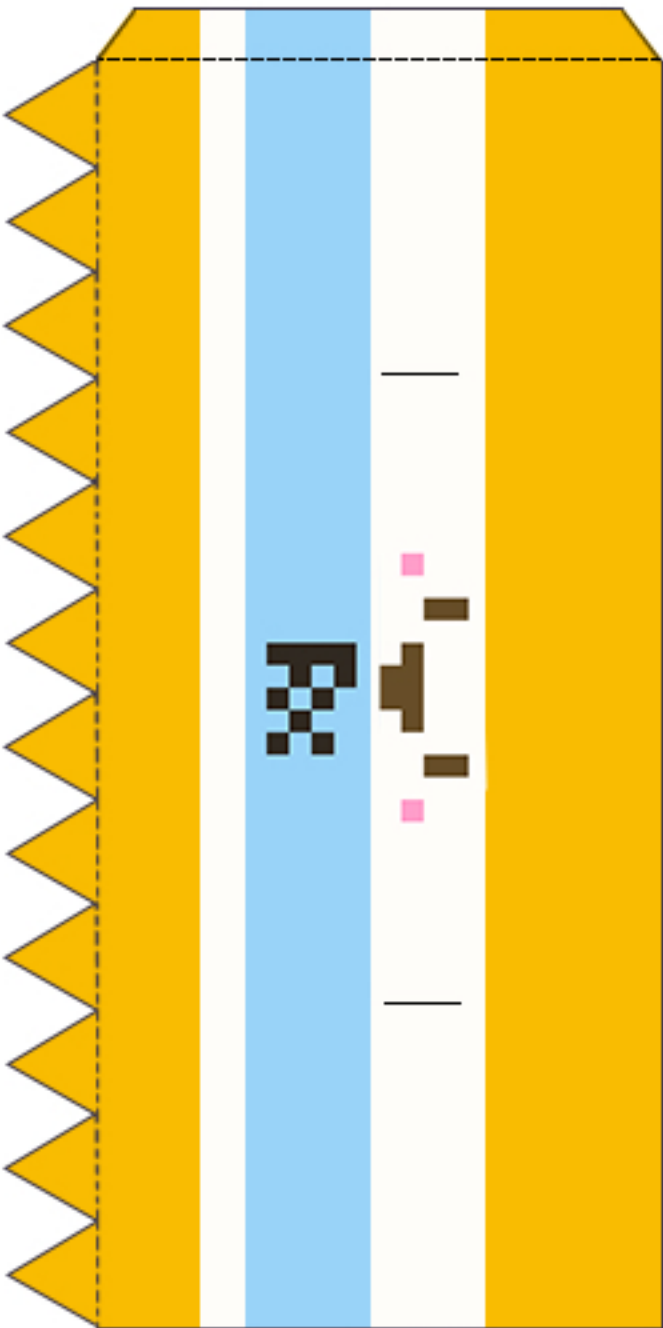
CAP



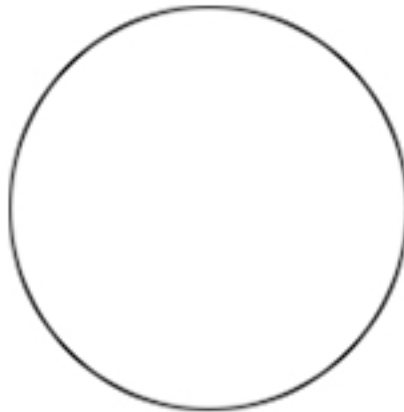
BODY
BASE

1. Cut out on solid lines
2. Fold the dashed lines
3. Roll and glue the body, cap, outer cap
4. Glue hands to themselves
5. Insert hands into body
6. Glue body to body base
7. Glue cap top to cap
8. Glue the folded part of outer cap around cap

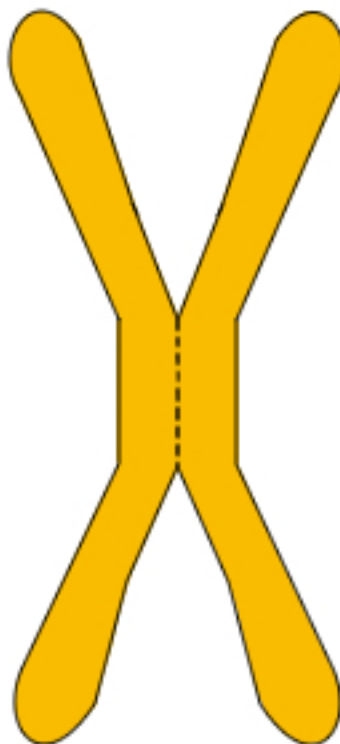
PILLY PAPER TOY



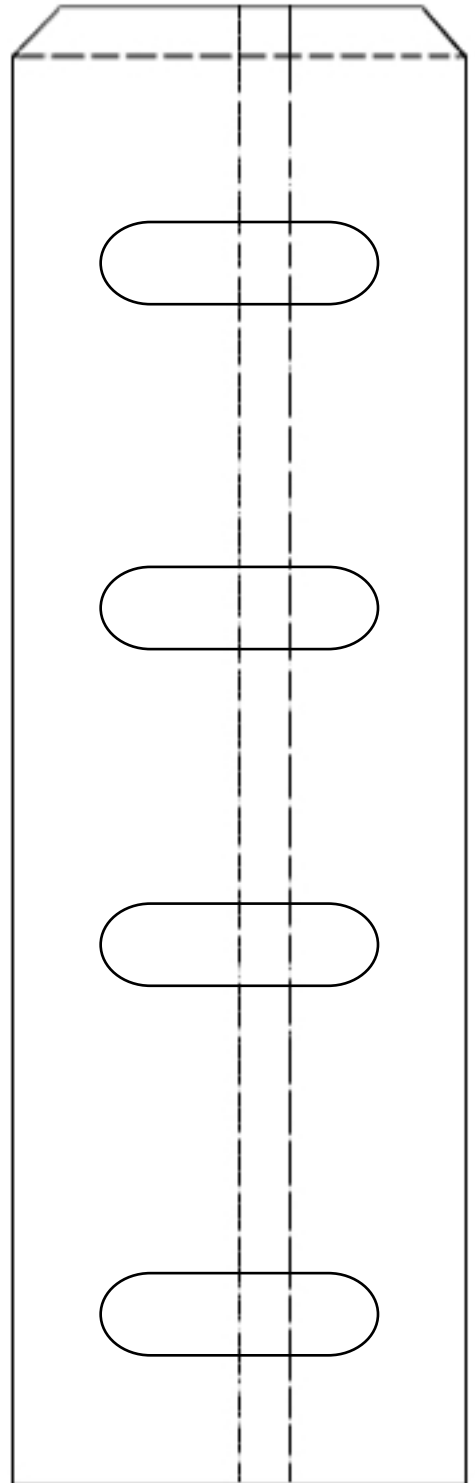
BODY



CAP TOP



HANDS



OUTTER CAP